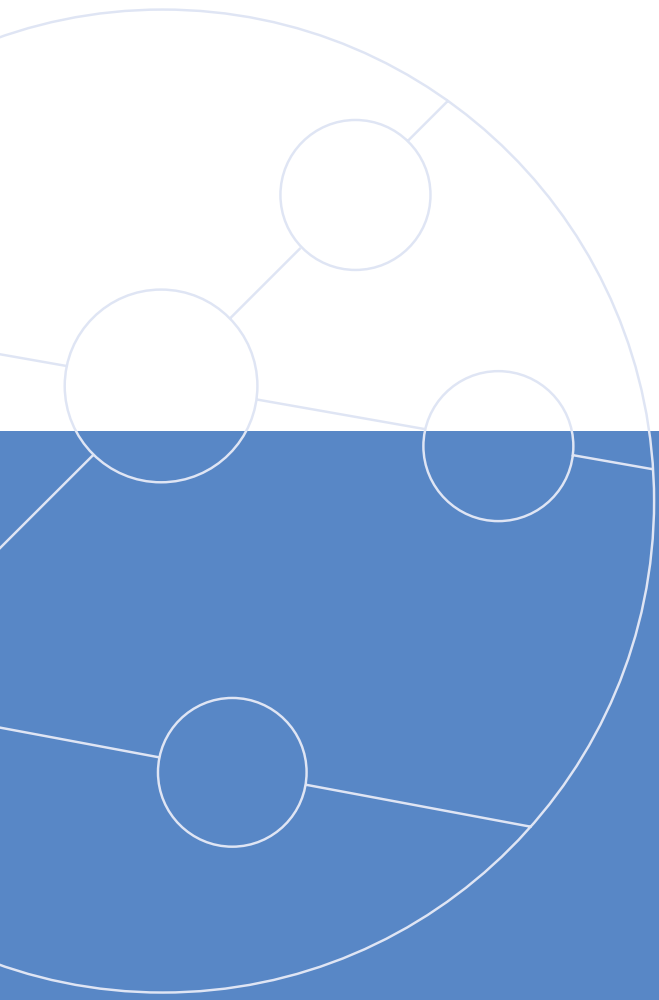


Victoria ATM/IP



ATM Network Tester



ATM Networks

Quick Installation and Troubleshooting



TrendCommunications

All You Need for ATM/IP

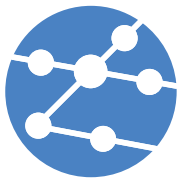
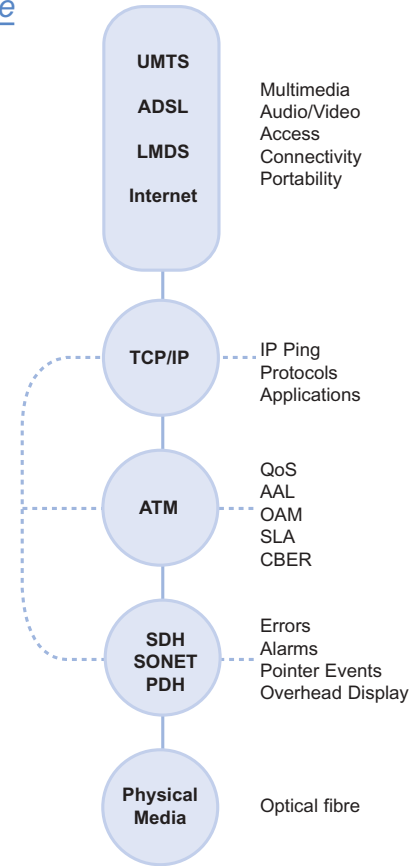
– quick and easy installation and maintenance

Due to their technical complexity, ATM (Asynchronous Transfer Mode) networks and equipment call for high-quality, high-capacity test equipment.



Victoria ATM/IP is a fully-equipped tester that meets all the needs for the commissioning, installation and maintenance of mixed ATM/IP networks, even in the most demanding circumstances. This is one of the reasons why network experts worldwide consider Victoria ATM/IP as an essential tool for any installer, carrier, service provider or mobile operator.

As a user of Victoria ATM/IP you will be amazed at how easy to use this sophisticated tester can be. Victoria's intuitive graphical user interface and touch screen guarantee that you will not be wasting time in configuring the tester. Just tap the screen and start testing.



Victoria ATM/IP

Essential Tool for ATM Networks

SDH, SONET, PDH and T-Carrier Interfaces

- Meets O.181 for SDH testers
- Programmable input gain: 0, 20, 26, 30 dB and automatic equalisation and compensation at monitoring points, in line with G.772
- Integrated interfaces for STM-1, STS-3c, OC-3c, DS3, E3, E1.
- Editing and monitoring of headers at 155 Mbit/s (RSOH, MSOH, HOP), 34 Mbit/s (MA, NR, GC, TR), and 2 Mbit/s (TS-0 and TS-16)
- Insertion and reading of section, line and path events: LOS, LOF, RS-TIM, MS-AIS, AU-AIS, AU-LOP, HP-RDI, HP-UNEQ, HP-SLM, OOF, B1, B2, MS-REI,...
- Generation and analysis of pointer events: Increment, decrement and NDF
- Frequency measurements and deviation
- J0 and J1 trail trace messages : Generation/Analysis of G.831 messages of 16 bytes with CRC and ECRC status
- Signal generation with frequency offset

ATM

- Tests at 2, 34, 45 and 155 Mbit/s
- ATM traffic generation with editing of overheads and payload
- Traceability of 1024 active connections
- ATM and CBER bit error tests
- Simultaneous analysis of CTD, 1-CDV, 2-CDV, CMR, CLR, CER, SECBR, SES and US
- End-to-end or segment F4/F5 cells
- AIS, RDI, continuity test and loopback OAM cells
- Graphical results and results by contents
- Cell capture function
- AAL-1 generation and analysis
- AAL-2 with generation and analysis of the CPS, SSSAR and SSETD sub layers
- AAL-5 generation and analysis

IP

- IP ping over ATM
- List of IP addresses by frequency
- Bandwidth use [bit/s]
- Traffic composition by protocol: TCP, UDP, ICM, IGMP [%]
- Traffic composition by application: WWW, FTP, Telnet, DNS, SNMP [%]
- Frequency and packet size

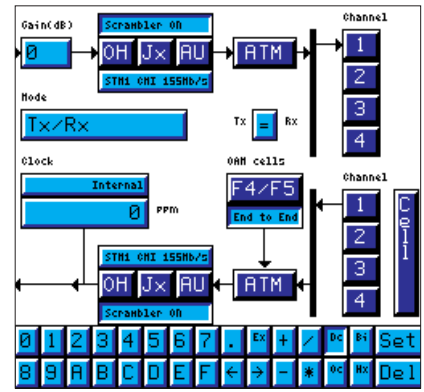
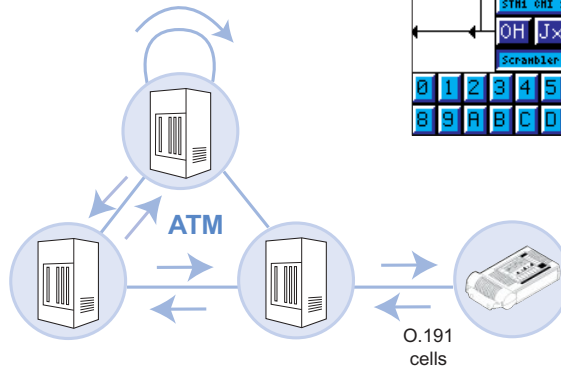
ATM

- the guarantee of performance and service

Optimising Your ATM networks

Victoria ATM/IP is truly powerful in performing various measurements simultaneously, for example monitoring errors while measuring QoS and analysing OAM.

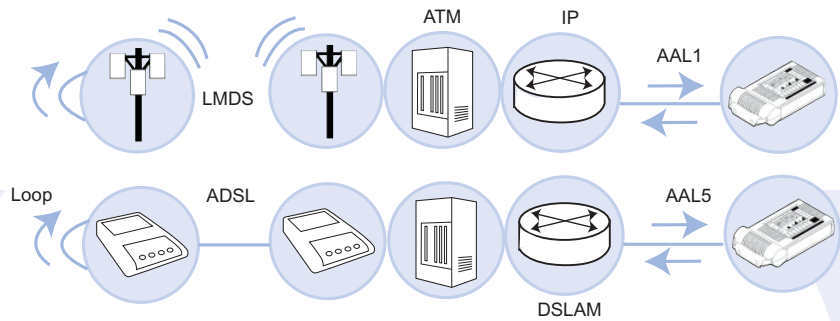
ATM layer measurement results, including physical layer use, are displayed as clear numeric tables or time graphs.



Installing Access Networks: LMDS and ADSL

There are two main strategies to implement the first mile access: ADSL in the local loop and LMDS as a wireless solution.

For LMDS Victoria can generate and monitor PRBS over AAL-1 with BER calculation, and for ADSL the tester monitors AAL-5, including OAM functions. IP ping is available for both ADSL and LMDS.



VPI	VEI	PTI	OLP	AAL Type			
9	32	0	0	1			
CSI	Seq	CR	Par	Pay			
0	13	1	4C	45	43	54	52
4F	4E	49	43	53	20		
31	39	39	39	2E	52		
47	41	53	20	41	41		
4C	31	2E	00	0A	56		
49	43	54	4F	52	49		
41	20	41	54	40	2E		
20	49	43	54	20	45		

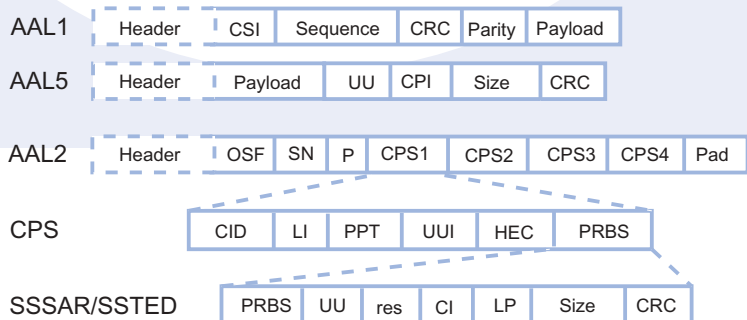
AAL-1 and AAL-5 Tests

Victoria ATM/IP enables you to generate and analyse traffic over AAL in real time, and you can also check the performance of the connections that emulate circuits (AAL-1) and transport data (AAL-5).



AAL-2 Tests

The AAL-2 adaptation layer is key in 3G wireless networks, such as UMTS, where Victoria ATM/IP is indispensable with its full physical layer tests, AAL-2 generation and analysis, IP ping, and traffic tests.



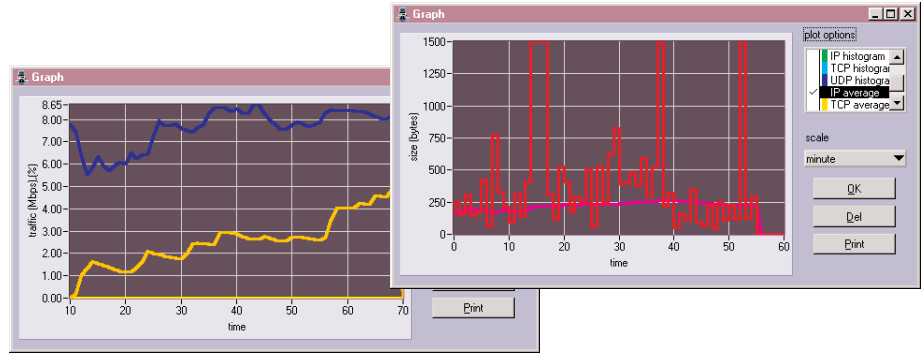
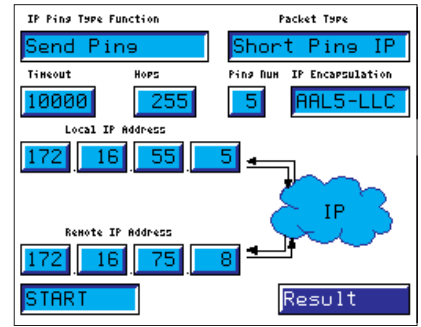
IP Analysis

universal language

IP is the basis for the new applications with universal connectivity. The performance of these new applications mainly depends on the correct configuration, topology and optimisation of the TCP/UDP/IP suite.

Victoria ATM/IP includes an IP ping function, and the tester is also equipped with external software for traffic analysis.

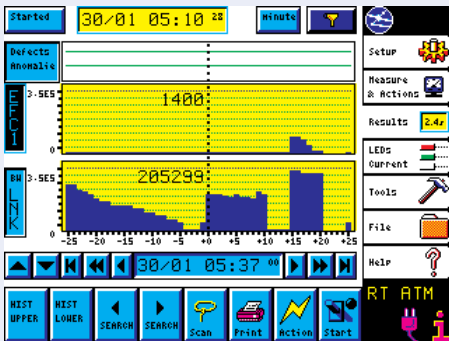
This enables you to test routing-level connectivity, check bandwidth use and locate any point where delays or data loss occur. You can also monitor the formats, protocols and applications used in your network.



Traffic bandwidth trace of total and active ATM channels enables you to control traffic efficiently

Manageable

power



- Time graphs and histograms
- Virtually unlimited capacity to register events
- Search, identification and quantitative functions

Tracing

Victoria is a powerful analysing tool that can register all types of events at transmission and switching layers. With Victoria, you can also save, print or transfer your results onto a PC.

Functions

Macros automatically carry out pre-programmed measurements with a single keypress. Auto-configuration detects the whole signal structure, and FastScan explores tributary alarms and errors.

Touch&Play®

The simple syntax and the touch screen offer you the most natural user interface you can find.

Light and Autonomous

Small size, light weight and independence make Victoria a really handy tester, perfect for both in- and outdoor use.

SoftLEDs®

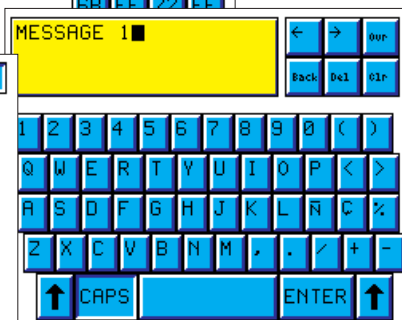
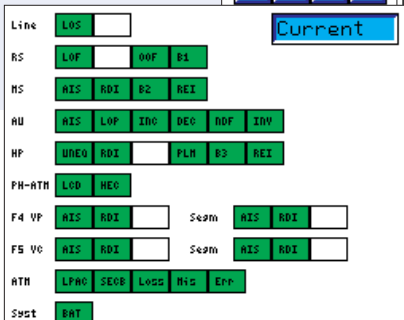
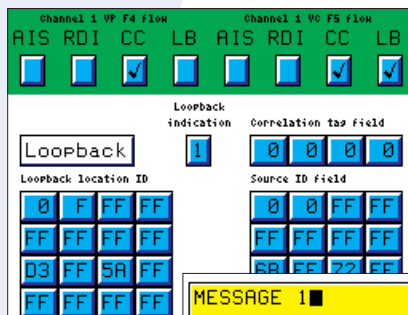
Up to 100 events can be displayed simultaneously with 10 external tricolour LEDs indicated on screen.

Connectivity

Thanks to the serial port, you can use Remote Control, print and dump results on a PC and connect the IP probe for traffic analysis.

Modes

Victoria can be operated in termination, transparent and mux/demux modes, in and out of service, across all the interfaces.





TrendCommunications Ltd.

Knaves Beech Estate
Loudwater
High Wycombe
Buckinghamshire
HP10 9QZ
United Kingdom

TrendCommunications

International: +44 (0)1628 524977

United Kingdom: 01628 524977

France: 01 69 35 54 70

Deutschland: 089 32 30 09 30

España: 93 300 3313

India: 022 28521059

Canada / Latin America: 1 256 461 0790

US Toll Free: 1 877 78TREND

Email: infoline@trendcomms.com

Web: www.trendcomms.com



Distributor

To arrange a demonstration or to obtain the latest information on the Trend **Victoria** ATM/IP or any of Trend's other test equipment, contact your nearest Trend Distributor.



A Subsidiary of IDEAL INDUSTRIES, INC.