

# VictoriaSTM-N/OC-M



*Universal, Compact, User-Friendly*

**SDH/SONET**

*PDH, T-Carrier, ATM and IP*



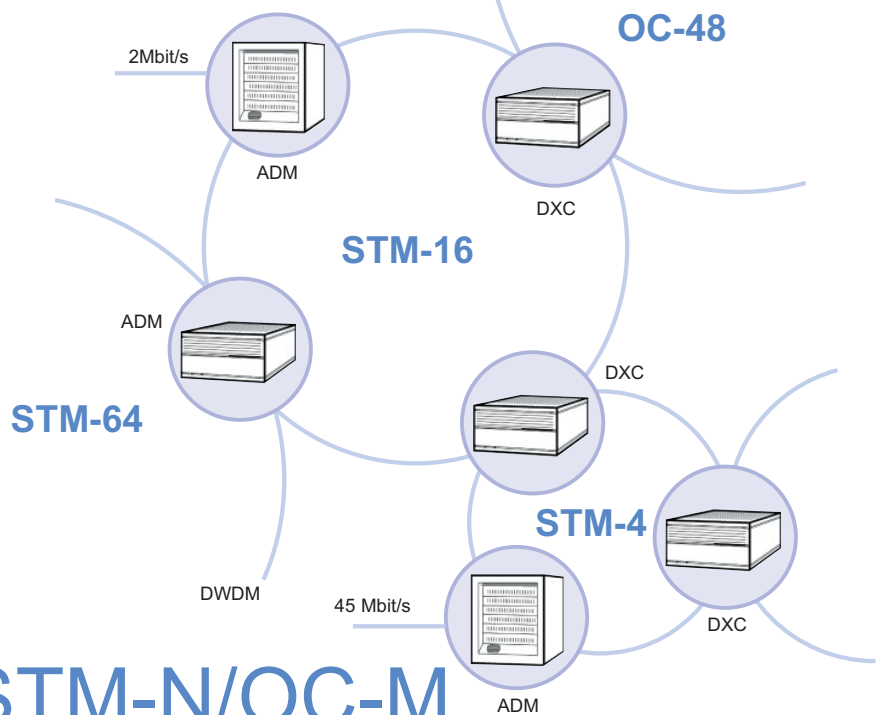
**Trend**Communications

# Global Transport

*Network*

The interconnection between technological cultures, the impact of the new applications and the widespread use of DWDM provoke a progressive integration of heterogeneous networks that offer new global high-capacity services.

In these new surroundings, the transport level is formed by SDH/SONET rings, whereas the access network is constructed by PDH and T-Carrier links.



## Victoria STM-N/OC-M

*Universal in Hierarchies, Interfaces and Performance*

### SDH/SONET Features

- Universal interfaces for SDH, PDH, SONET and T-Carrier up to 2.5 Gbit
- Advanced remote control with graphical user interface
- Path trace in J0, J1 and J2
- G.821, G.826, G.828, G.829, M.2101 performance
- Tandem Connection Monitoring (TCM) and APid tests
- G.783 pointer sequences
- TIE and frequency measurements
- Event insertion/analysis for all interfaces and frames
- Line frequency offset generation
- All the SDH, SONET, PDH and T-Carrier interfaces in one tester; no extra modules needed
- VC-4-4c and STS-12c SPE  
VC-4-16c and STS-48c SPE

### IP Features

- IP Ping over ATM
- List of most frequently used IP addresses
- Bandwidth use (bit/s)
- Traffic composition by protocol: TCP, UDP, ICMP, IGMP
- Traffic composition by application: WWW, FTP, Telnet, DNS, SMTP

### ATM Features

- Tests at 2, 34, 45 and 155 Mbit/s
- ATM traffic generation with editing of overheads and payload
- Traceability of 1024 active connections
- ATM, CBER Bit Error tests
- Simultaneous analysis of CTD, 1-CDV, 2-CDV, CMR, CLR, CER, SECBR, SES and US
- End-to-end or segment F4/F5 cells
- AIS, RDI, continuity test and closed loop
- Graphical results, and results by containers
- Cell capture function
- Generation and analysis of AAL1
- AAL2 with generation and analysis of the CPS, SSSAR and SSETD sub-layers
- Generation and analysis of AAL5



There are several models available. For more information, please contact Trend Communications.



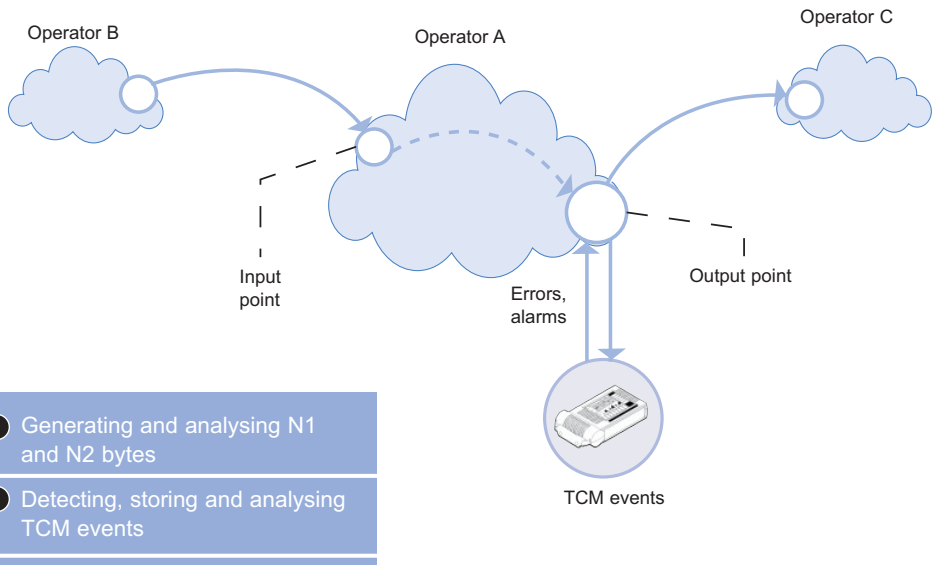
# Maintenance

## and Monitoring

### Tandem Connection Monitoring (TCM)

There is an increasing amount of services and applications making use of interconnected networks that have complex relationships of collaboration and competition.

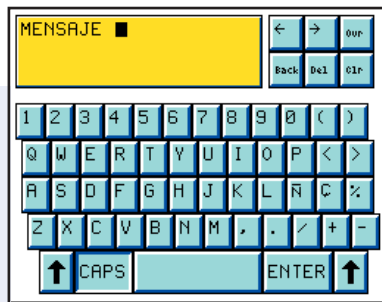
In this environment, the mechanisms to detect alarms and errors are essential and determine the responsibility of each operator.



Keyboard to save results, edit the file name and add comments

### Registering and Tracing Events

Tracing is the most powerful analysing tool in a tester, if it has, like Victoria, an unlimited capacity of registry, instant printing, filtering, search and quantifying functions for all events. Victoria can also save and transfer the results onto a PC.

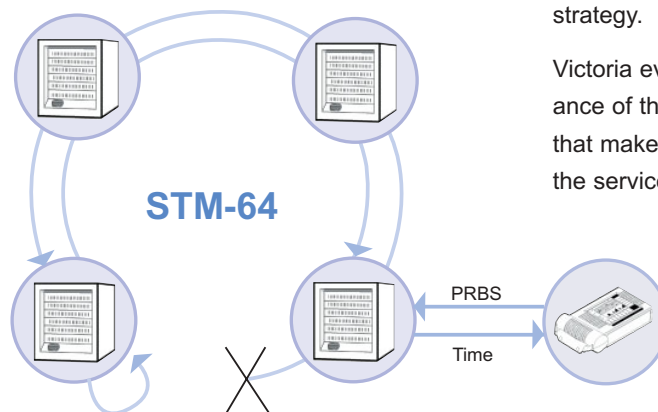
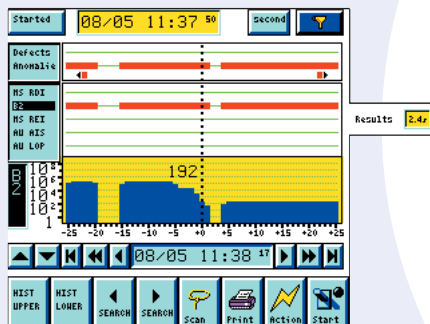


- Time graphs and histograms for errors, alarms and pointer events
- Virtually unlimited capacity to register events
- Memory-storable graphs
- Search, identification and quantifying functions

### Automatic Protection Switching (APS)

SDH and SONET networks tolerate errors where the APS protocol defines the protection strategy.

Victoria evaluates the performance of the APS mechanisms that make sure to re-establish the service in case of failure.



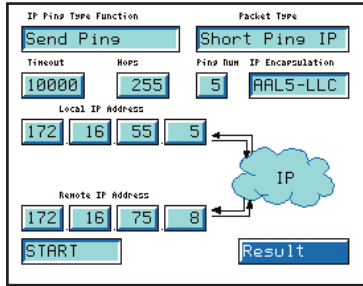
# ATM

*Guaranteed Performance and Service*

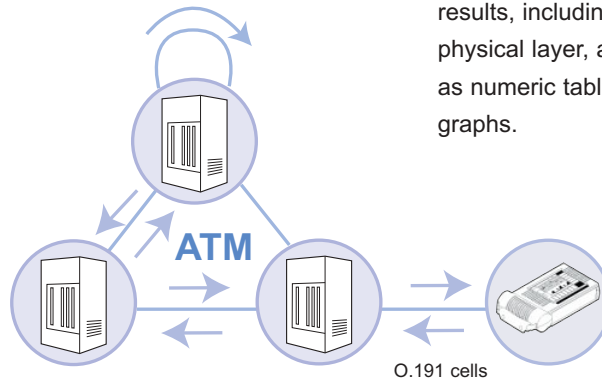
## Optimising the ATM Network

Victoria is truly powerful when performing various measurements simultaneously, for example monitoring errors while measuring QoS and analysing OAM.

The ATM layer measurement results, including the use of the physical layer, are represented as numeric tables and time graphs.



QFC	VPI	VEI	PTI	CLP	AAL Type
0	6	32	1	0	3/4
ST	SN	MID	OPT	Bitap	Resizex
2	000	0	0	0	0
53	49	40	55	4C	41
43	49	4F	4E	20	44
45	20	43	41	52	47
41	53	20	41	41	4C
33	2F	34	2E	00	0A
56	49	43	54	4F	52
49	41	20	41	44	011 0N

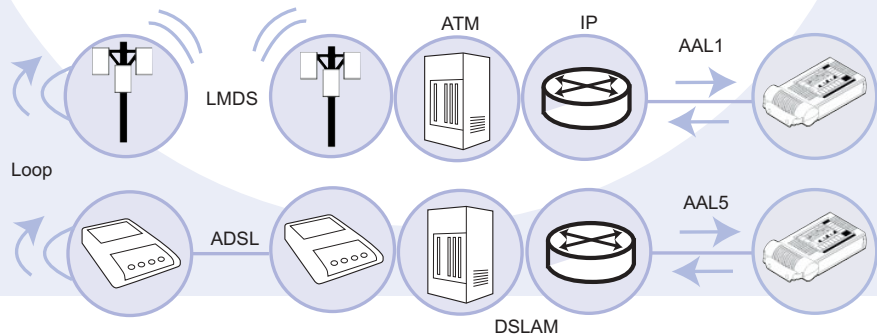
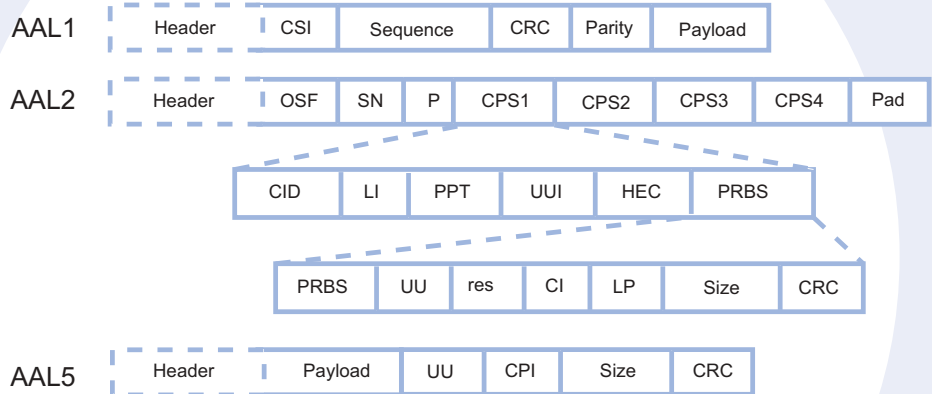


## The Solution for UMTS/3G Networks

ATM technology is used in 3G mobile networks and new UMTS networks, mainly in fixed access infrastructure.

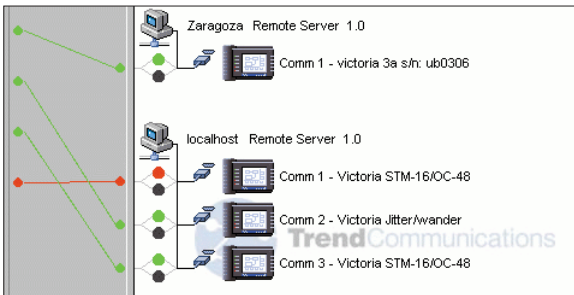
The 3G Partnership Project (3GPP) defines a wide range of protocols between end users and networks, residing above ATM Adaptation Layers 2 and 5 (AAL-2 and AAL-5).

AAL layer testing makes Victoria suitable for ADSL and LMDS applications as well.

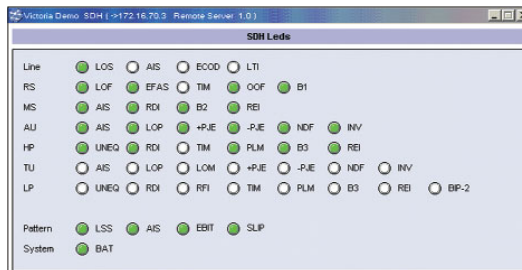


# Remote Control

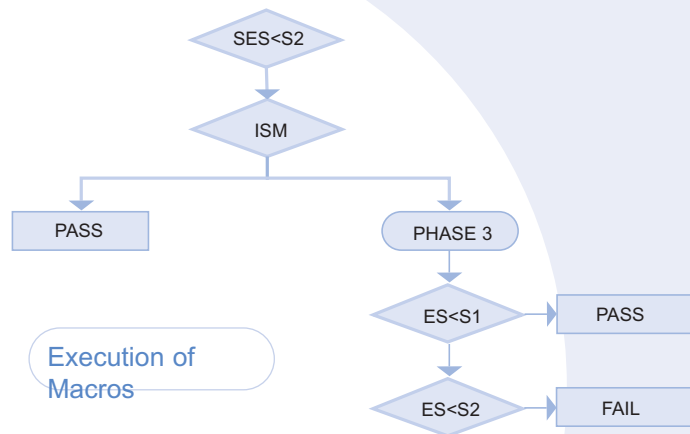
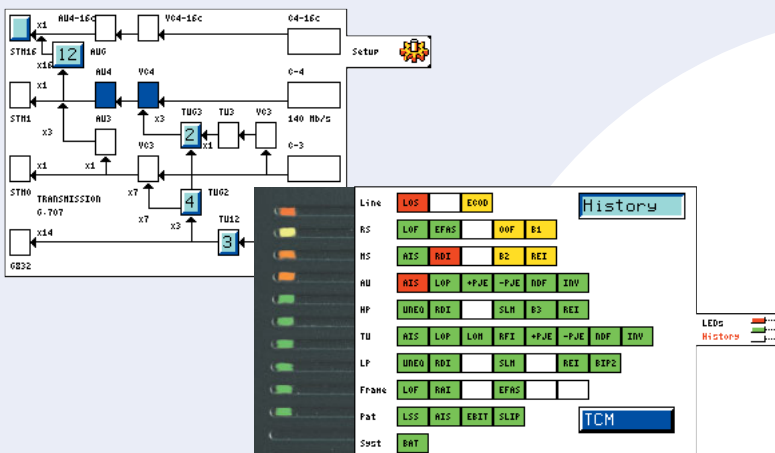
*from Anywhere, Anytime*



Technicians can now avoid unnecessary trips: the network of testers is accessible from anywhere in the world. With Victoria, users in distinct locations can easily compare results obtained by various testers connected to the Internet.



# Manageable Power



## Functions

The Macros enable automatic, pre-programmed measurements with a press of a button. The Autoconfiguration detects the whole signal structure. The Fastscan explores alarms and errors in synchronous tributaries.

## Touch&Play®

The simple syntax and the touch screen offer you the most natural and efficient user interface in the market.

## Light and Autonomous

Its small size, light weight and autonomy make Victoria a handy tester for both field and factory work where efficiency is a keyword.

## Easy-to-Clean Optical Connectors

Optical interfaces can easily get dirty in dusty environments. However, keeping them clean is essential to avoid errors or loss of signal. Removable optical connectors enable you to easily clean or replace the connectors.

## SoftLEDs®

Up to 100 events can be displayed simultaneously, with 10 tricolor LEDs identified on screen.

## Modes

Victoria operates in termination, transparent and mux/demux modes, in or out of service, in all the interfaces.



**Trend**Communications Ltd

Knave's Beech Estate  
Loudwater  
High Wycombe  
Buckinghamshire  
HP10 9QZ  
United Kingdom

## TrendCommunications

International: +44 (0)1628 524977

United Kingdom: 01628 524977

France: 01 69 35 54 70

Deutschland: 089 32 30 09 30

España: 93 300 3313

India: 022 28521059

Americas: 1 256 461 0790

US/Canada Toll Free: 1 877 78TREND

Email: [infoline@trendcomms.com](mailto:infoline@trendcomms.com)

Web: [www.trendcomms.com](http://www.trendcomms.com)

Distributor

To arrange a demonstration or to obtain the latest information on the Trend **Victoria**STM-N/OC-M or any of Trend's other test equipment, contact your nearest Trend Distributor.

