

# Network Impairment Observer (NIO) Software

## PLATFORMS



NIC®



NIC BP®



NIC Plus®



NIC EP™

## KEY FEATURES

- Monitor the status of multiple NICs simultaneously
- View detailed reports of alarms and errors
- User-adjustable thresholds for automatic alerts
- Provides a snapshot of network health in real time
- Allows the user to correlate alarm and error indications
- Enables faster troubleshooting
- Reduces downtime
- Reduces the cost of network maintenance

The NIO application, the key element in a Managed Test System, allows users to monitor, control and manage up to 30 Digital Lightwave, Inc. NIC products (NIC 2.5G, NIC 10G, NIC NXG, NIC GigE, NIC Plus, NIC EP).

Using NIO, a single user can monitor the status of multiple NICs simultaneously, view detailed reports of alarms and errors, and can set up thresholds for automatic alerts.

NIO provides a snapshot of network health in real time, allows the user to correlate alarm and error indications and enables faster troubleshooting, reduces downtime and reduces the cost of network maintenance.

Once connected to an NIC, the application polls that NIC for its status. The poll rate is defined by the user and can range from 1 second to an hour. This polling time is approximate. If a large number of NICs are connected, the polling time might be longer.

The number of concurrent NICs that are connected is dependant on the local systems resource - typically, 10-30 connections.

Alarms can be filtered by user-assigned severity levels – minor, major and critical. Errors can be filtered by user-assigned error-rate thresholds. The user interface includes advance sorting and filtering so that the user can display exactly the information desired.

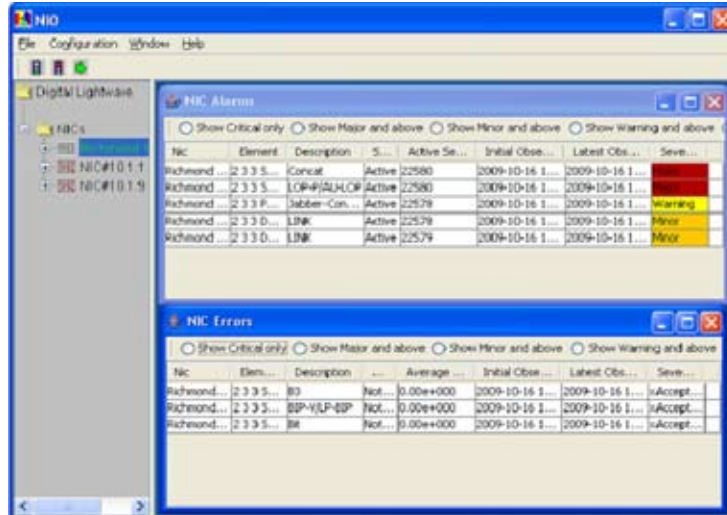
# NETWORK IMPAIRMENT OBSERVER (NIO) DATASHEET

## MAIN APPLICATION VIEW

The NIO application main view consists of a tree and monitor views. The tree view displays all defined Digital Lightwave NICs and is located on the left half of the screen.

The monitor views include an Alarm Panel and an Error Panel, and optionally a Local Events History panel.

Toolbars, status bar, menus, and right mouse support are all supported by the application.



## NIO/NIC APPLICATION

The NIO application monitors Digital Lightwave NICs, and enables a single user to check on the status of multiple NICs at the same time.

It also provides a quick access method to NICs that need to be investigated.



For more information or a sales quote, visit [www.lightwave.com/contact](http://www.lightwave.com/contact) or email [dlsales@lightwave.com](mailto:dlsales@lightwave.com)



**Corporate Offices**  
5775 Rio Vista Drive  
Clearwater, FL 33760, USA  
Toll free: +1.800.548.9283  
T: +1.727.442.6677  
F: +1.727.536.3541

**Middle East/Africa/Asia**  
Jebel Ali Free Zone  
P.O. Box 261126  
Dubai, U.A.E.  
T: +971.4.3606013  
F: +971.4.3606014

**Latin America**  
Capulin #1, Tabla Honda  
Tlalnepantla C.P. 54126  
Mexico  
T: +52.55.2207-1500  
F: +1.727.442.5660

**Europe**  
P.O. Box 193  
Shepperton TW17 7AU  
United Kingdom  
T: +44.(0).193.224.1335  
F: +44.(0).193.224.1335