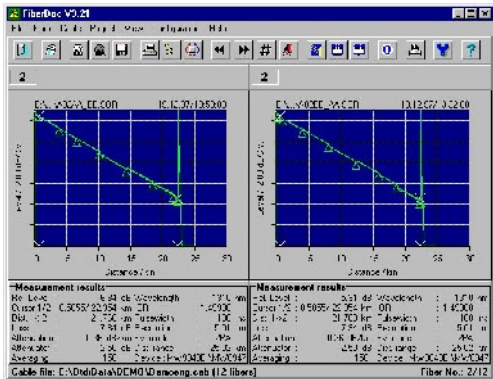


FiberDoc® The analysis and documentation tool for your OTDR measurements

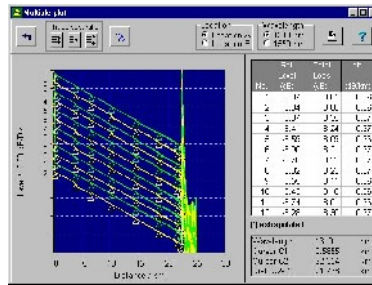
<http://www.fiberdoc.de/english/>

Made in Germany – since 1995



► **Convenient browsing function.** The default view of a fiber within a cable shows the traces of both measurement directions together with their settings and results. You can browse through the fibers and wavelengths via symbol buttons or functions keys or you can select one particular fiber.

FiberDoc is a powerful software for the evaluation and documentation of OTDR measurements with many unique features. See the table below for details. Endface images can be included in the documentation via a separate option.



► **Multiple Traces view** gives a quick survey over the fibers of a cable. A maximum of 12 fibers can be shown in one screen.

Fiber	Loss (dB)	Dir	Att	Loss (dB)	Dir	Att
1	0.08	1	0.08	0.08	2	0.08
2	0.08	1	0.08	0.08	2	0.08
3	0.08	1	0.08	0.08	2	0.08
4	0.08	1	0.08	0.08	2	0.08
5	0.08	1	0.08	0.08	2	0.08
6	0.08	1	0.08	0.08	2	0.08
7	0.08	1	0.08	0.08	2	0.08
8	0.08	1	0.08	0.08	2	0.08
9	0.08	1	0.08	0.08	2	0.08
10	0.08	1	0.08	0.08	2	0.08
11	0.08	1	0.08	0.08	2	0.08
12	0.08	1	0.08	0.08	2	0.08

► **Loss Table** shows attenuation in dB/km and total loss of each fiber in a cable as individual values for each direction and as mean value from both directions.

Outstanding features:

■ **Support of various OTDR data formats** FiberDoc can read a large variety of different OTDR formats and it detects the format automatically. Measurements done with different OTDR types and under different measurement conditions can be used in the same cable file or be compared without problems.

■ Cable/link related analysis of multiple fibers

This function is different from standard OTDR emulation software. FiberDoc organizes all fibers of an optical link in a cable file. After some basic steps of formatting and preparation of cursors and event settings, FiberDoc creates comparable, equally scaled traces, complete total loss and event tables, including bi-directional averaging and averaging over all fibers. Pre- and postfibers are taken into account.

■ **Cable databases** Cable databases are used to organize your cables. Search the databases for measurement locations or other characteristic properties of a cable. The databases are also useful to organize different header structures of your cables. New cables are automatically added to the database.

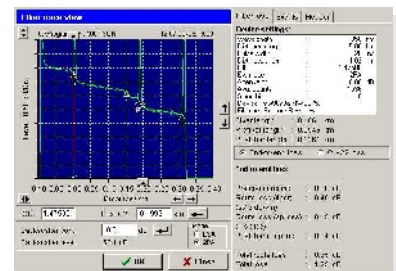
■ **Cable documentation** FiberDoc creates a complete documentation of all cable results. For special requirements, tables can be exported to ASCII files for import by spreadsheet applications, with a special support of macro applications for instance with MS-EXCEL. Tables can also be written to HTML files.

■ **Fiber projects based on individual fiber settings**

■ **Storing fiber modifications**

■ **Filer conversation**

... and many more.



► **Fiber Trace View.** Details about the event table and fiber text fields are available via the Events and Header tabs on the right.

► More products:



FiberShow is a viewer for reports created with FiberDoc. FiberShow customers are entitled to give it to their customers together with the cable documentation.



FiberLog is an easy to use control software, which controls the OTDR to prevent errors setting the correct wavelength and filenames.

► Sales & Support :

Please contact our sales team:
Ms. Uta Rennau
Tel. +49 (0) 0381 3677-9664-0
Fax: +49 (0) 0381 3677-9664-9
E-Mail:sales@fiberdoc.de

Sharedat Deutschland
 Friedrich-Barnewitz-Str. 3
 18119 Rostock-Warnemünde, Germany