

Posts holders Pedestal Clamps

PST
PSC/PSCA/PSCS

PST

RoHS Catalog Code W6039

Pedestal Bases can be mounted directly on a vibration isolator or laboratory bench and are ideal for flexible positioning of optical units with low optical axis.

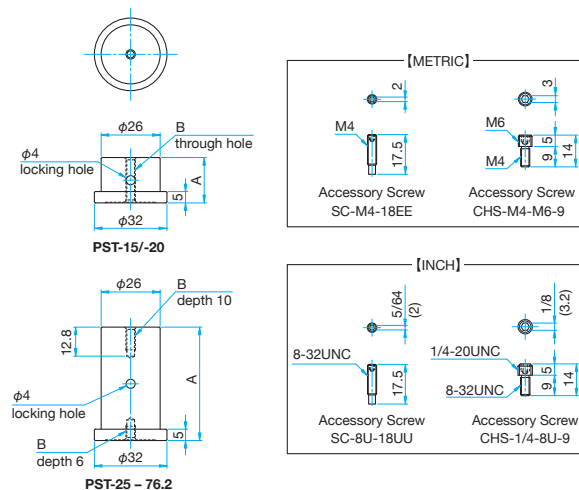


Outline Drawing



PST

Dog Point Set Screws SC-M4-18EE...1 screws,
M4-M6 Conversion screw CHS-M4-M6-9...1 screws (METRIC)
Dog Point Set Screws SC-8U-18UU...1 screws,
8-32-1/4 Conversion screw CHS-1/4-8U-9...1 screws (INCH)



Specifications		Primary material: Stainless Steel Finish: None	
Part Number		A [mm]	Weight [kg]
METRIC B=M4	INCH B=8-32UNC		
PST-15	PST-15UU	15	0.07
PST-20	PST-20UU	20	0.08
PST-25	PST-25UU	25	0.1
PST-25.4	PST-25.4UU	25.4	0.1
PST-30	PST-30UU	30	0.12
PST-35	PST-35UU	35	0.15
PST-38.1	PST-38.1UU	38.1	0.16
PST-40	PST-40UU	40	0.17
PST-45	PST-45UU	45	0.19
PST-50	PST-50UU	50	0.21
PST-50.8	PST-50.8UU	50.8	0.21
PST-55	PST-55UU	55	0.23
PST-60	PST-60UU	60	0.25
PST-63.5	PST-63.5UU	63.5	0.26
PST-76.2	PST-76.2UU	76.2	0.31

PSC/PSCA/PSCS

RoHS Catalog Code W6040

Clamps for Pedestal Bases (PST). Used in combination with a Pedestal, the Pedestal can be freely positioned and secured on a vibration isolator or laboratory bench.

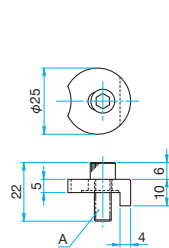
- The PSC-10 is used in pairs, for clamping a Pedestal at two positions, and the PSCA / PSCS is used for clamping at a single position.
- Since there is a long hole in the PSCA / PSCS, it is possible for coarse adjustment of the horizontal direction.
- After alignment, tighten the attached M6 screw to secure the Pedestal.



Outline Drawing

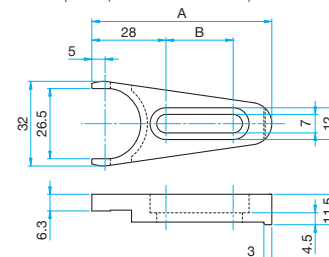


PSC-10/10UU



PSCA/PSCS

Hexagon socket head cap screw (stainless steel construction) M6x12...1 screws (METRIC)
Hexagon socket head cap screw (stainless steel construction) 1/4-20UNCx1/2...1 screws (INCH)



Part Number	A (mm)	B (mm)
PSCA-11.5/11.5UU	60	22
PSCS-11.5/11.5UU	68	25.4

Specifications		Primary material: Stainless Steel Finish: None	
Part Number	A	Weight [kg]	
PSC-10	M6 P1	0.065	
PSC-10UU	1/4-20UNC	0.065	

Specifications		Primary material	Finish	Weight [kg]
Part Number				
METRIC	INCH			
PSCA-11.5	PSCA-11.5UU	Aluminum	Black Anodized	0.02
PSCS-11.5	PSCS-11.5UU	stainless Steel	None	0.06